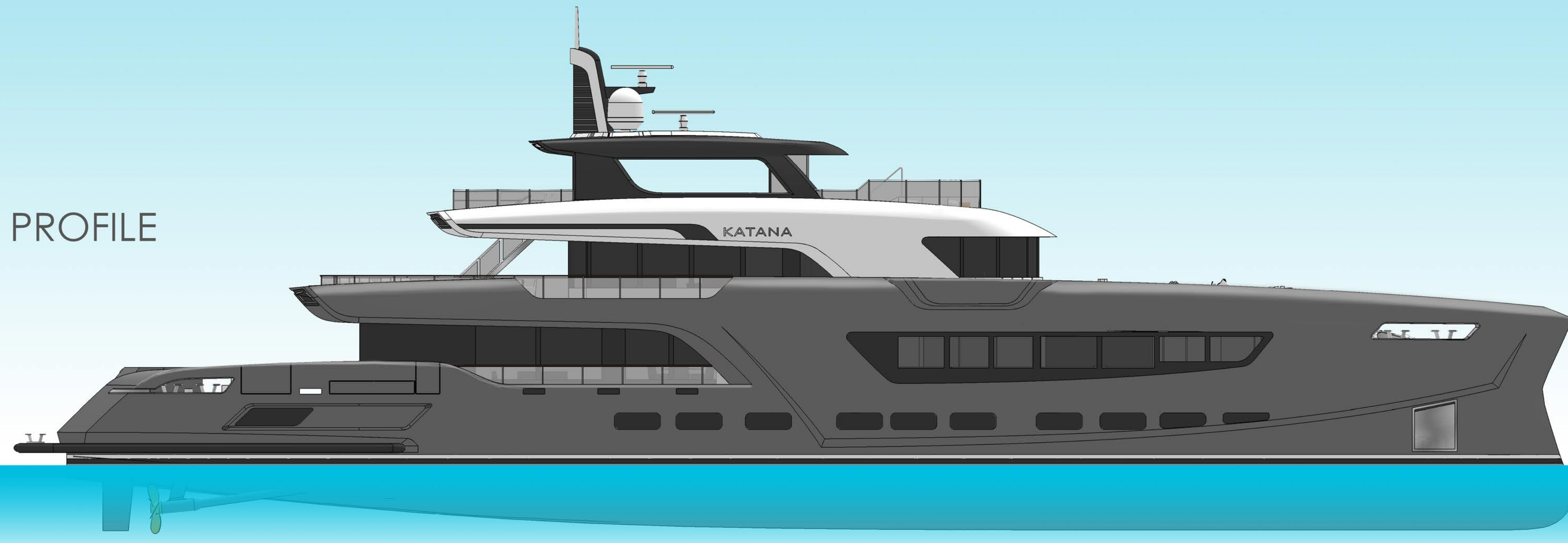
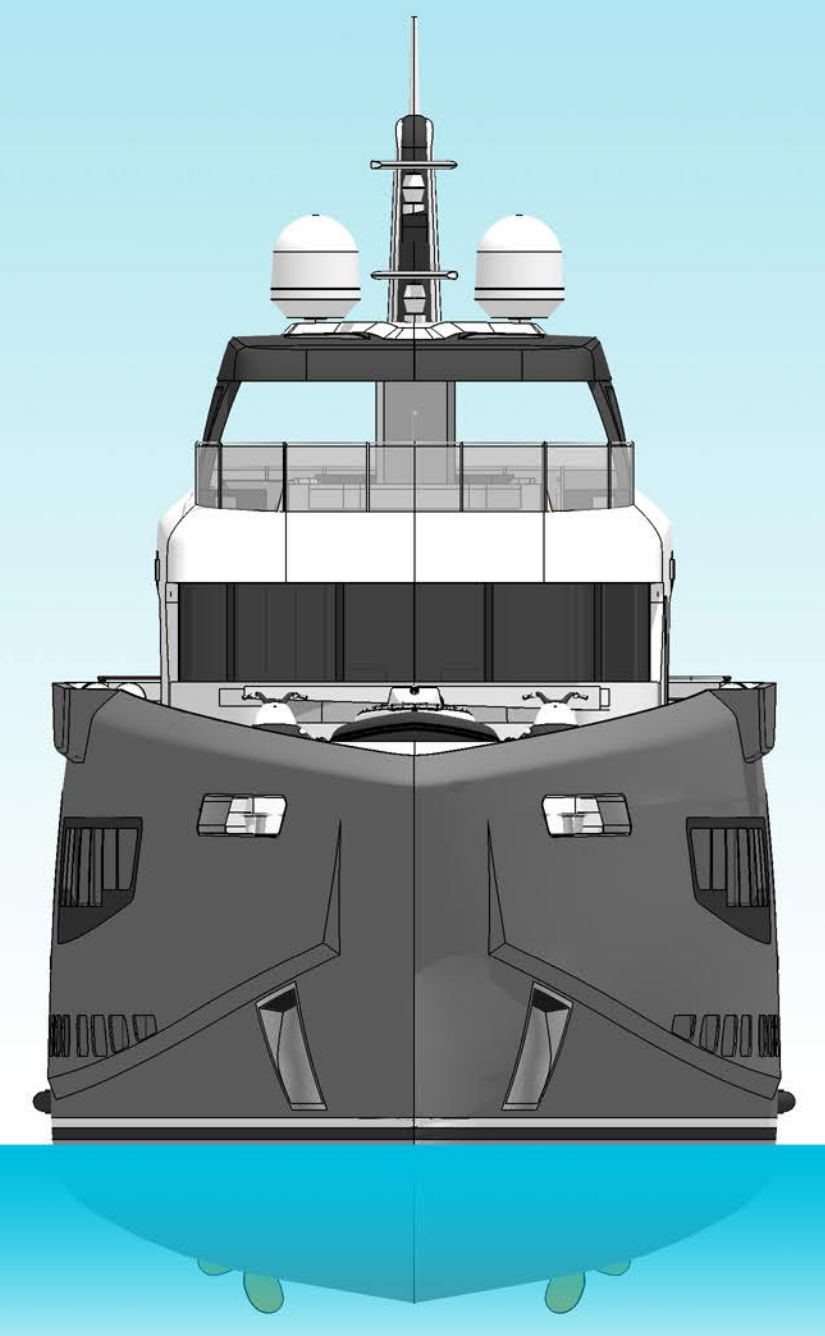


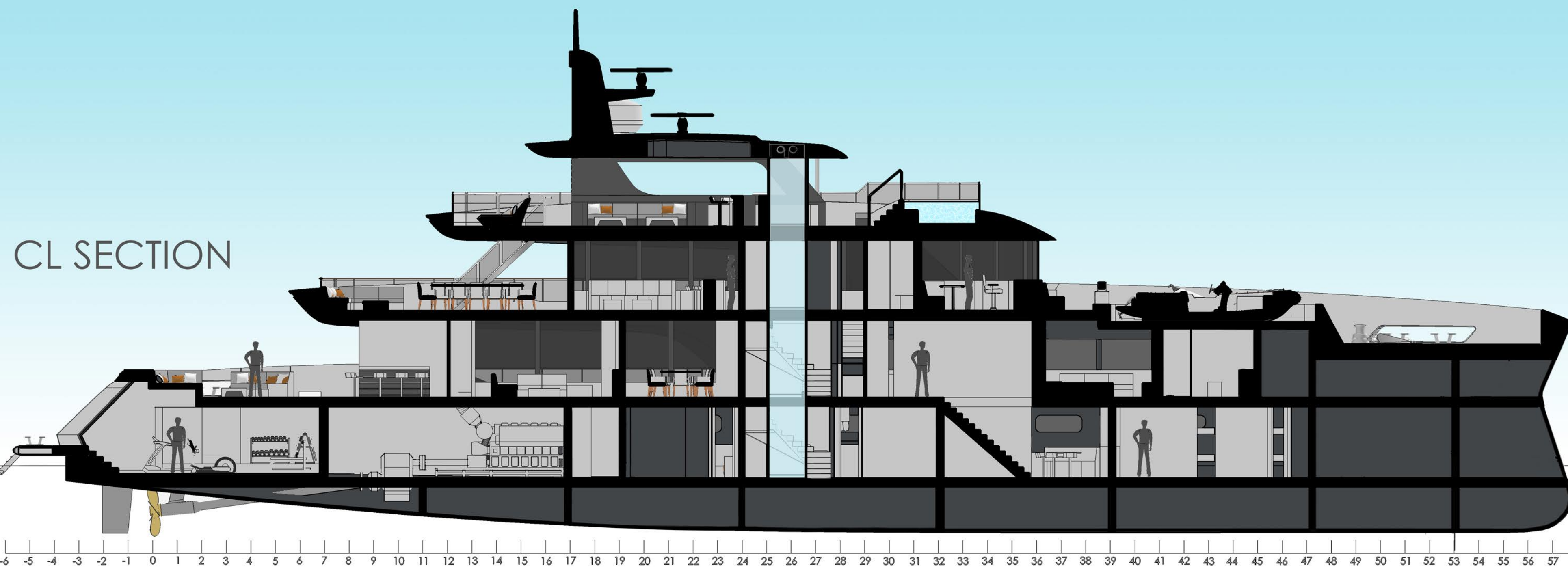
PROFILE



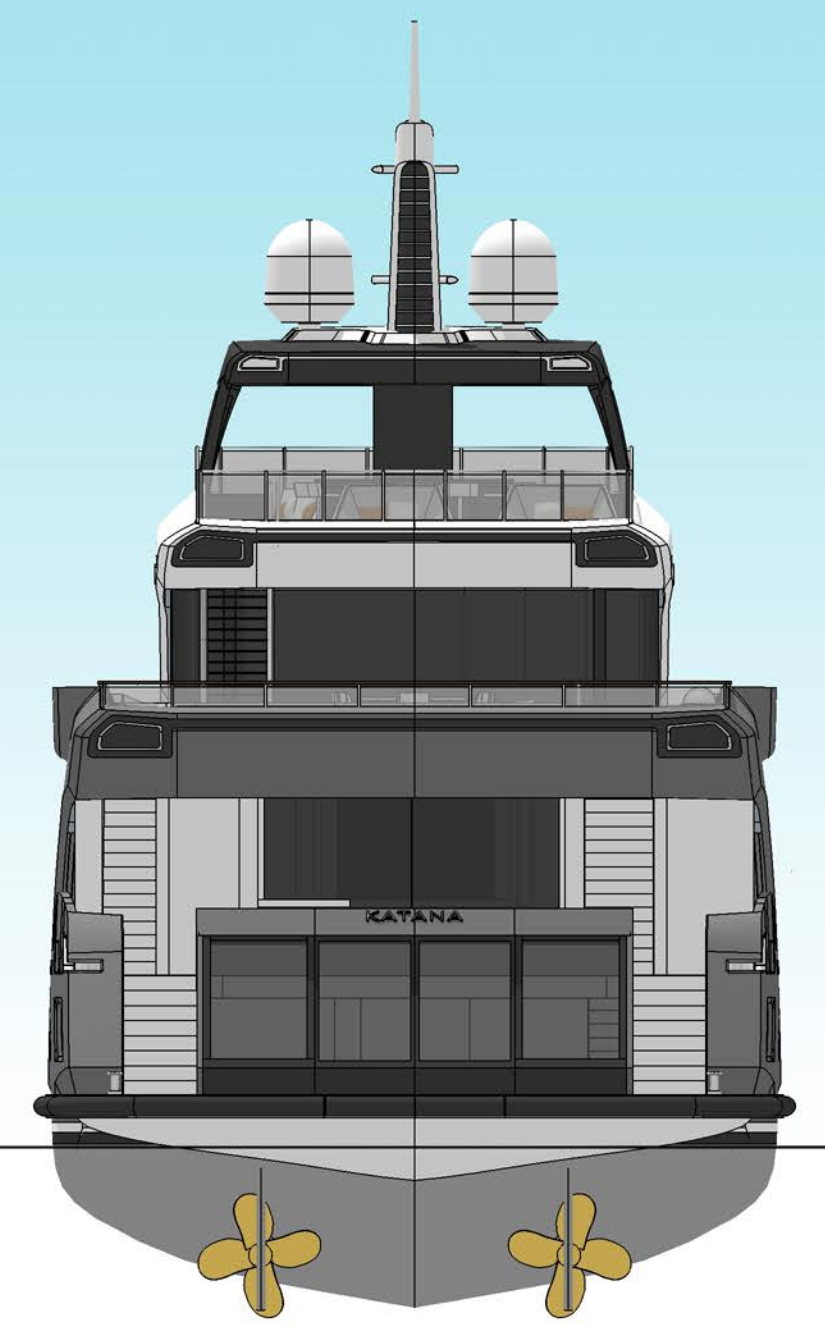
FRONT



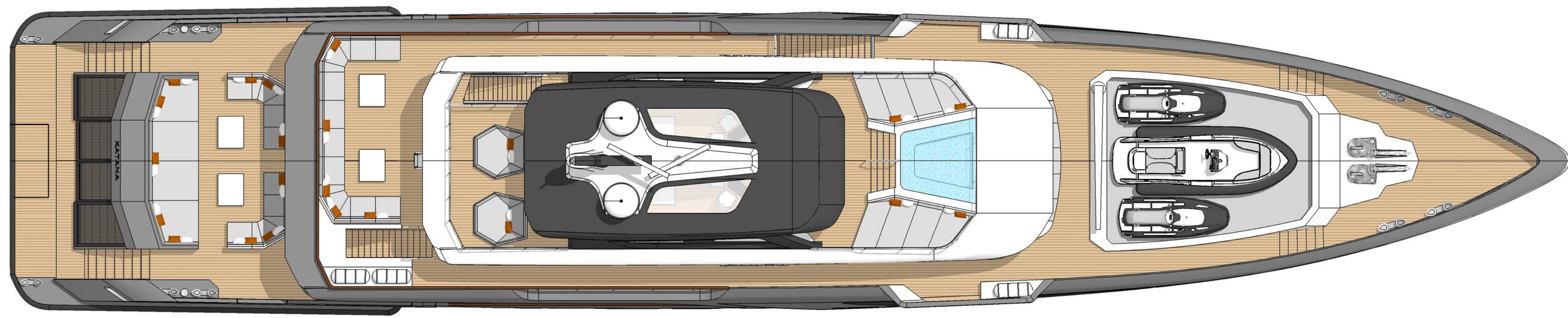
CL SECTION



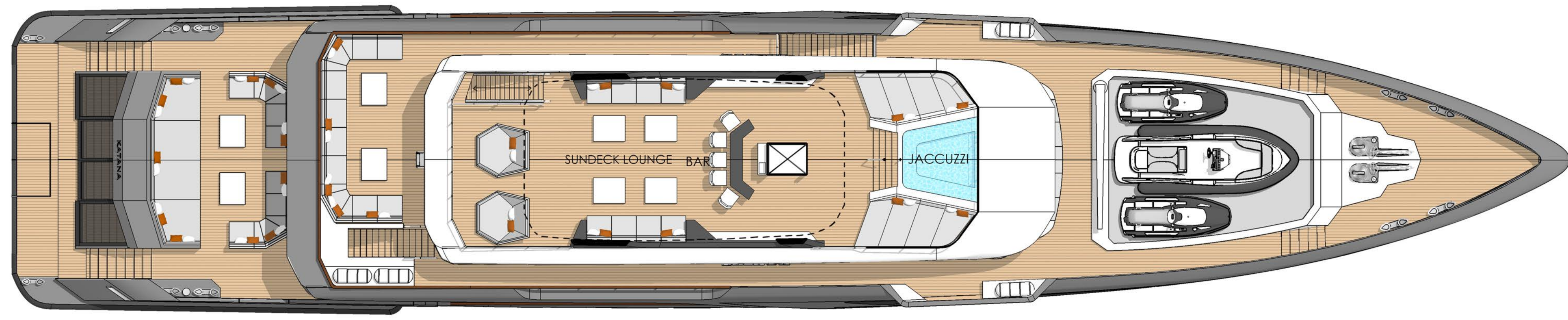
BACK



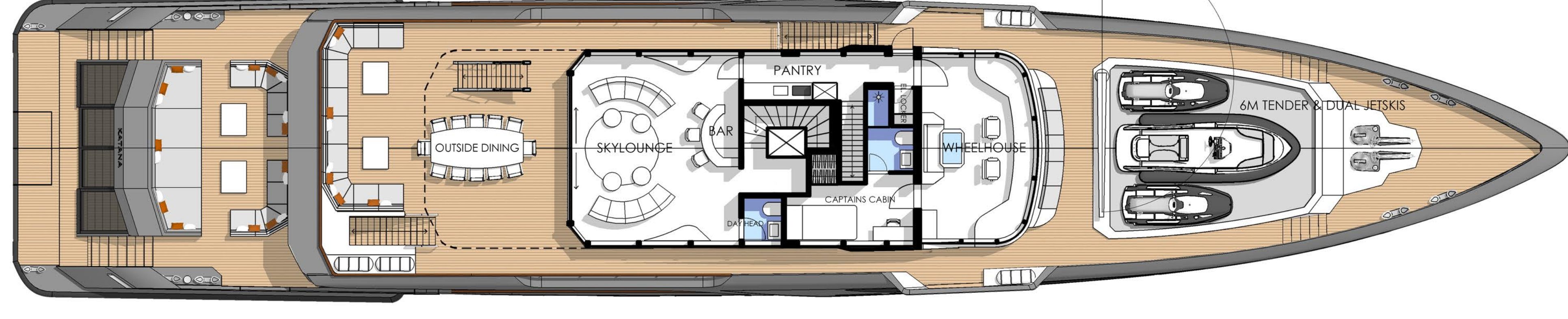
TOP VIEW



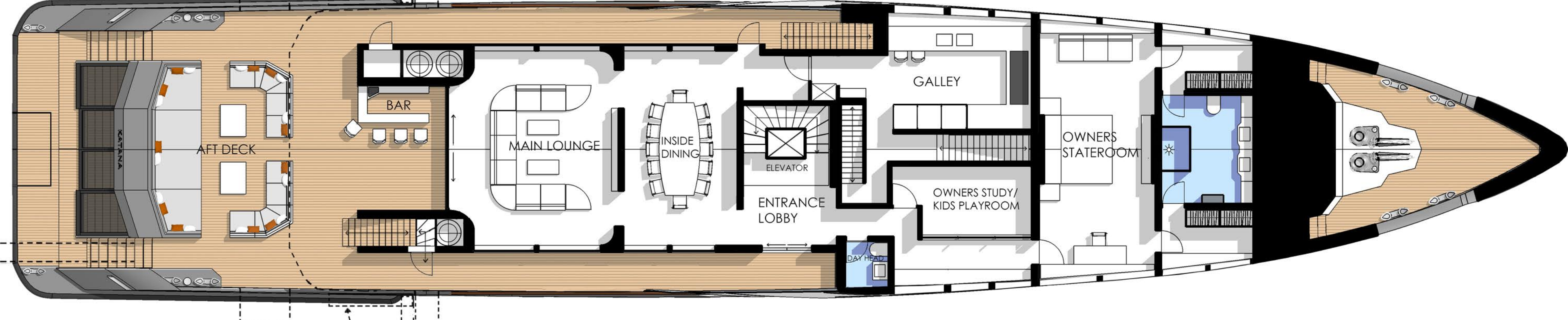
SUN DECK



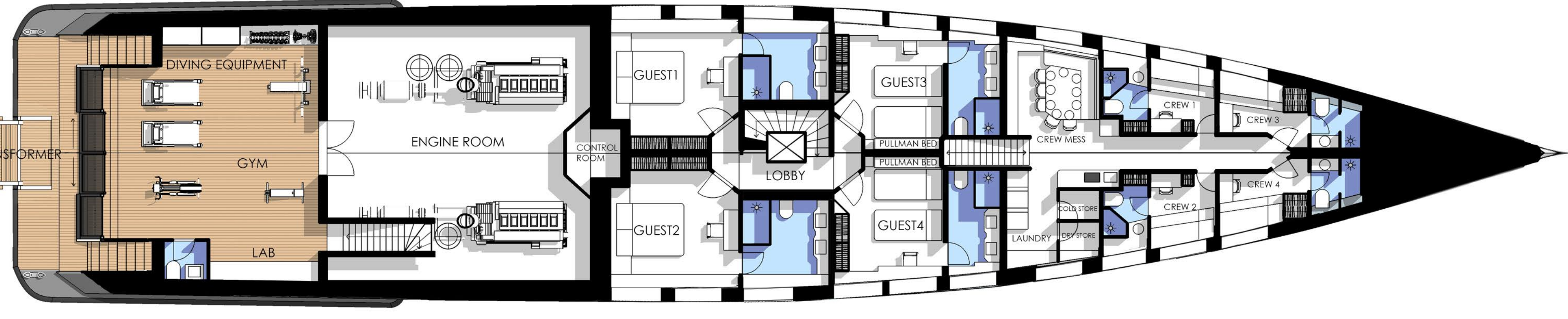
WHEELHOUSE DECK



MAIN DECK



LOWER DECK



**GENERAL INFORMATION**

Katana is a 50M superyacht designed with a modern and practical layout. The concept targets people who want a luxurious yacht with all the amenities, but also requires a vessel that can handle rough weather conditions and have explorer-ship capabilities.

The name "Katana" is inspired by the Japanese Samurai sword. Being an object of beauty the sword also has exceptional sharpness. The overall lines and shapes as well as the bow of the yacht is inspired by the elegance, simplicity and effectiveness of the Katana blade.

LENGHT:	50M
BEAM:	10M
DRAFT:	2M
MASS APPROX:	700 TONS
PASSENGER CAPACITY:	12
CREW CAPACITY:	8
MAX SPEED:	20 KNOTS
CRUISING SPEED:	12KNOTS
PROPULSION:	DIESEL ELECTRIC
CONSTRUCTION:	ALUMINIUM

